

Your NEA ID:

November 2021  
Rishanda Richardson, Editor

# In the Loop

Missouri NEA's electronic newsletter

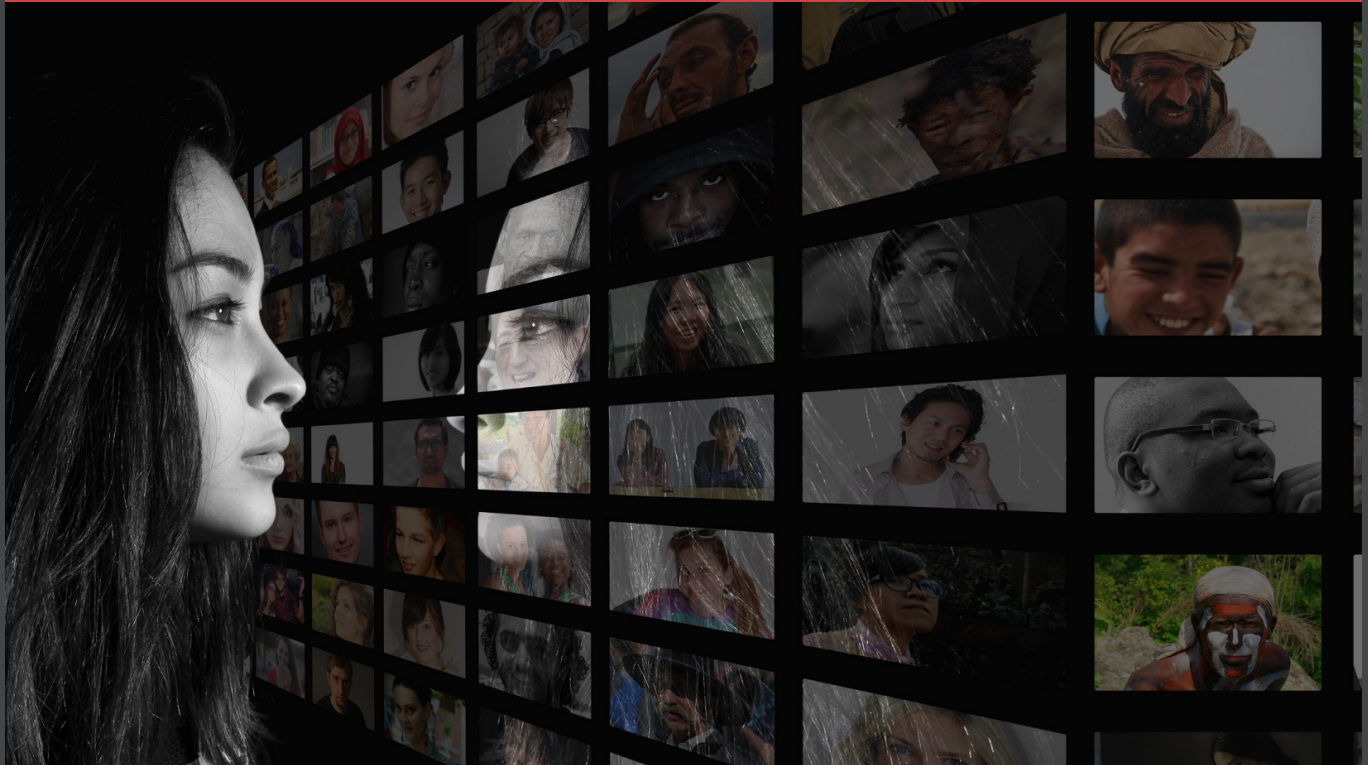


News

Training

Benefits

Take Action



## Conversations About Diversity & Belonging

6:30-9 p.m. Tues., Jan. 18, 2022

Now is your chance to engage in a conversation about equity and belonging. Join MNEA for Introduction to Conversations on Diversity and Belonging, and decide if you would like to take part in the 6-part program.

## Conversations About Diversity and Belonging: Re-Centering Empathy & Equity

All sessions are Tuesdays, 6:30-9 p.m.

Dates: Feb. 8 and 22, March 8 and 29, April 12 and 26

Conversations about Diversity and Belonging: Re-Centering Empathy & Equity is a six-session facilitated and interactive virtual program that provides a foundation for initiating and engaging in relational conversations about race, otherness, equity, and belonging in various settings: home, work, and community. This program uses timely open-source materials that provide access to key racial literacy perspectives and a selection of literary works by authors of color to frame conversations about diversity and belonging.

[Read More >](#)



### Contribute to the HOPE Fund on #GivingTuesday

Through the Humanitarian Outreach Project for Education Fund, Missouri NEA assists students and schools in need. The HOPE Fund replaces school supplies, equipment and clothing lost due to fire, natural disaster, hardship or



### \$500 Tuition Grant for probationary teachers and education support professionals

Sponsored by Reliant Financial Services, MNEA members who are probationary teachers or Education Support Professionals who are taking a course to advance their career in education are eligible to receive a \$500 tuition grant toward the cost of a three-hour course.

Applications must be received on or before Jan. 31. The drawing will be held on Feb. 8, 2022.



### Gilbert Balderrama Minority Scholarship

Encourage your promising students to apply for the Gilbert Balderrama Minority Scholarship. Applications are due Jan. 15. To qualify, applicants should be ethnic minority seniors at a public high school in Missouri and accepted to a college or university for fall 2022 enrollment with the intent to earn a college degree. Applicants do not have to be

other special circumstance. Contributions are tax-deductible. On #GivingTuesday, set up a one-time or recurring donation for HOPE.

[Read More >](#)

[Read More >](#)

pursuing a degree in education.

[Read More >](#)

A vibrant banner for the Read-On Missouri Tour. The background is white with a black silhouette of a hand holding an open book at the bottom left. The sky is filled with colorful, floating books and dots. A yellow starburst in the top right corner contains the text: "Applications due Jan. 2, 2022. mnea.org/read-on". The main text reads "Read-On" in a gold script font, followed by "Feb. 28-March 4, 2022" in a smaller font, and "Missouri Tour" in a large, bold, white sans-serif font. Below this is the tagline "Let your imagination soar." in a red and gold font. On the right side, there are two logos: "Read across America" with the National Education Association logo below it, and the "Missouri NEA" logo with the tagline "Unite. Inspire. Lead." below it.

Applications due  
Jan. 2, 2022.  
[mnea.org/read-on](http://mnea.org/read-on)

*Read-On*  
Feb. 28-March 4, 2022  
**Missouri Tour**  
Let your imagination soar.

Read  
across  
America  
NATIONAL EDUCATION ASSOCIATION  
Celebrating A Nation Of Diverse Readers

Missouri  
NEA  
Unite. Inspire. Lead.

## Sign up for a stop on the Read-On Missouri Tour

Since 1999, MNEA has sponsored Read Across America tour to help inspire reading in Missouri's youth. MNEA Pres. Phil Murray and Vice Pres. Rebeka McIntosh will engage with students about the connection between reading and success in life. We encourage MNEA local affiliates to organize assemblies that promote lifetime reading habits and use skits, parades, games and other activities that celebrate reading and how reading opens doors to opportunities to learn and grow in our diverse world.

The official tour is Feb. 28–March 4, 2022.

To apply for a stop on the Read-On Missouri Tour, complete the short online application no later than **Jan. 2, 2022**.

Questions? Contact Mark Jones at (573) 644-9609 or [mark.jones@mnea.org](mailto:mark.jones@mnea.org).

[Read More and Apply >](#)



Missouri's delegation also consists of MNEA-Retired, Aspiring Educators, local association and cluster delegates.

[Read More >](#)

## Run for state delegate to 2022 NEA RA

Candidacy deadline: Jan. 15

The 2022 NEA Representative Assembly is anticipated to take place in Dallas on July 2-6, 2022. Based on membership numbers, Missouri NEA was eligible to send 23 state delegates to vote at the national business meeting last year. MNEA president, vice president and NEA directors are considered ex officio delegates.

MNEA is currently seeking candidates for state delegate. If you are interested in meeting members from other state affiliates, witnessing the largest democratic body in the nation in action, and representing Missouri NEA, submit your declaration for candidacy by **Jan. 15, 2022**. Candidates will need to submit a headshot and 100-word statement to appear on the ballot. The election will take place in February.

Submit your declaration online at [www.mnea.org/NEARA](http://www.mnea.org/NEARA).

## PSRS-PEERS Board of Trustees Report

MNEA Legislative Director Otto Fajen attends the Board meetings of the Public School Retirement/Public Education Employees System. Read the report from the Oct. 25, 2021 meeting. The report summarizes the investment performance, system operations, audit and valuation, budget and

## 2022 Dr. Martin Luther King Jr. Essay-Poster Contest

The Missouri NEA Human Rights Committee is sponsoring the 2022 Dr. Martin Luther King Jr. Essay-Poster Contest for K-12 public school students. "Fulfilling Dr. King's Dream: Reading to Lead and Transform" is the theme for the 2022 contest.

2022 DR. MARTIN LUTHER KING JR. POSTER-ESSAY CONTEST

*Fulfilling Dr. King's Dream: Reading to Lead and Transform*

All entries are due Jan. 15, 2022. Find contest details at [mnea.org/mikcontest](http://mnea.org/mikcontest).

Unite. Inspire. Lead.

**\$2500**  
Educator  
**JACKPOT**

capital projects. The PSRS-PEERS Board will be holding elections this spring. Watch for your ballot to be mailed to you in April.

**January 2022 Cost-of-Living-Adjustment (COLA)** - Based on last year's CPI-U figure and in accordance with the System's Funding Policy, the Board voted unanimously to grant a 5.0% COLA increase for January 2022. The final FY 2021 CPI-U figure is +5.39%.

[Read More >](#)

Winners are determined in five grade-level categories: K-1, 2-3, 4-5, 6-8, and 9-12. A certificate and gift card is awarded to each first-place (\$50), second-place (\$30), and third-place (\$20) winner in the five categories. Teachers of winning students will receive a \$25 gift card.

All final entries must be received by MNEA no later than Jan. 15, 2022. Late entries will not be judged.

Questions? Contact Lisa Blaha, MNEA UniServ Director at [lisa.blaha@mnea.org](mailto:lisa.blaha@mnea.org) or (636) 614-7501, Roxane Bly at [roxane.bly@mnea.org](mailto:roxane.bly@mnea.org) or (573) 644-9606.

[Read More >](#)

California Casualty, the provider of the Missouri NEA Auto & Home Insurance Program, is offering MNEA Members a chance to win a \$2,500 Educator Jackpot.

One more chance left with winners randomly selected in December for the \$2,500 prize.

No obligation to enter.

[ENTER NOW >](#)



**EDUCATORS RISING**  
**Scholarship**  
Apply Now

[www.mnea.org/scholarships](http://www.mnea.org/scholarships)

Missouri NEA

### \$500 Educators Rising scholarship for high school seniors

Sponsored by the MNEA, Educators Rising-Missouri is giving one deserving future teacher a \$500 scholarship to pursue their college degree. Applicants must be a member of their high school Educators Rising chapter, ranked in the top 20 percent of their class, entering the Educators Rising-Missouri state competition in spring 2022, and if 18-years-old,

## Apply Now



### \$500 Cochran Scholarship

Applicants must be pursuing a degree in education and a member of MNEA Aspiring Educators.



Former Missouri NEA Executive Director Peggy Cochran and late husband Paul were both teachers. Both come from families of teachers. Two of their children are teachers in the St. Louis area. They believe that teaching is the most rewarding career anyone can choose. To encourage people to become teachers, they created a \$500 scholarship in support of one of these individuals each year.

Applicants must currently be in their freshman, sophomore or junior year at a Missouri college or university and a member of Aspiring Educators. Apply by Jan. 31, 2022.

[Read More >](#)

registered to vote.

**Application Deadline: Jan. 31, 2022**

[Apply Now](#)

## ESP Learning Network Webinar

### **Avoid the Burnout** **How Taking Care of You is the First Step in Meeting the Needs of the Whole Student**

6-7:30 PM | Thurs., Dec. 9, 2021

Self-care isn't one size fits all. This workshop is for educators and school support staff struggling to balance life with the challenges of being good at their job, a responsible caregiver to children and other family members, while still doing important work.

If you feel depleted and exhausted, join this webinar to learn how to take better care of you! Participants will leave with a toolbox full of wellness strategies, techniques, and tips to overcome life's challenges. During the webinar, we will learn different self-care strategies to overcome the chronic stress that many Education Support Professionals are feeling. Topics will cover how to balance demands, how to make time for yourself, and mindfulness to avoid burnout and continue to meet the needs of your students.

**Presenter:** Amy Morin, Vice-President, Lexington Education Association, Massachusetts



[Register Now >](#)

Contact MNEA Teaching & Learning Director Ann Jarrett ([ann.jarrett@mnea.org](mailto:ann.jarrett@mnea.org), (573) 644-9625) for questions.

### Learn more about ESP Learning Network Webinars

The NEA ESP Quality Department offers a wide variety of professional development webinars to support the professional growth of school support staff. [Learn more >](#)

## Earn up to nine graduate credits for \$225 from Central Methodist University

For one low annual fee of \$225 (valued at \$2,900), Missouri NEA members may take one course each term (fall, spring, and summer) to complete up to three graduate courses in 12 months. Or you may take two courses in the summer and skip either the fall or spring semester. Each course is two or three graduate credit hours, so educators can earn from six to nine graduate credits.



Choose from 35+ self-paced, online courses for professional growth or salary advancement. MNEA partners with Central Methodist University and Virtual Education Software to offer these courses.

If you have questions about the program, please contact MNEA Teaching & Learning Director Ann Jarrett ([ann.jarrett@mnea.org](mailto:ann.jarrett@mnea.org)) or Teaching & Learning Assistant Laurie Bernskoetter ([laurie.bernskoetter@mnea.org](mailto:laurie.bernskoetter@mnea.org)) at (573) 644-9623.

[Enroll Today >](#)

## Learn with MNEA

Mark your calendars and participate in professional development offerings.

### "I Can Do It" Beginning Teacher Assistance Program (VIRTUAL)

"I Can Do It" is designed for teachers in their first two years and any teacher who wants to improve their classroom management skills. Missouri NEA partners with Maryville University to offer a meaningful program that meets the beginning teacher assistance program certification requirement.

Register at [www.mnea.org/ICanDoIt](http://www.mnea.org/ICanDoIt).

Mondays 6:30-8:30 p.m. Feb. 21, 28, March 7, and 14

## National Board Certification Workshops

**NBC Candidate Boost Days (VIRTUAL)**

These workdays are for candidates who plan to submit one or more components in 2021-2022. Register Feb. 26 and April 9 at [www.mnea.org/nbc](http://www.mnea.org/nbc).

**Exploring NBC (VIRTUAL)**

This workshop is for educators who want information about the National Board Certification process and benefits. Free, online and open to all educators.

Mon., Jan. 24 or Sat., April 9

# TEAM UP

WITH CALIFORNIA CASUALTY

Apply to receive **\$1,000**  
Thomas R. Brown Athletics  
Grant for your school's team.



**California Casualty**  
AUTO AND HOME INSURANCE

**Apply Today**

SPECIAL MEMBER DISCOUNTS • EXCLUSIVE ENTERTAINMENT & TRAVEL OFFERS

**SAVE UP TO \$90 OFF GATE PRICES**

BUY TICKETS

**AMAZING OFFERS THIS WEEK**

- Walt Disney World® Resort | Save up to \$50
- Universal Orlando Resort™ | Save up to \$45
- SeaWorld | Save up to \$60
- Crunch | Get \$40 off the app
- Ski Resorts | Save up to 30%

EXPLORE THE POSSIBILITIES

**SAVE UP TO \$75 OFF GATE PRICES**

Identity Theft Plans  
Exclusively for Members of MNEA

**Missouri NEA**  
Unite. Inspire. Lead.

VIEW MORE DETAILS NOW >

**NEA Discount Tickets Program**

**Identity Theft Protection**  
Missouri NEA has partnered with Securus ID powered by Experian to provide members

**My Deals**



Enjoy member-exclusive access and deep discounts on tickets to must-see places, events and shows, including St. Louis Cardinals, St. Louis Blues and Kansas City Chiefs.

- Save up to 40% on amusement and water parks, including Disney resorts and Universal Studios!
- Get discounts on local movie tickets.
- Access high-demand concerts and major events.
- Pay no additional ticket fees.
- Save on live entertainment tickets, including Broadway, Las Vegas attractions and sports events.
- Find discounted tickets in the United States and worldwide.

[Buy Tickets](#)

access to high-quality identity theft protection plans with a 100% success rate at a 60% discount. While you may take every precaution to keep your identity safe, sadly, almost daily we hear about data breaches from big businesses that puts you at risk of fraud.

There is a range of packages that are designed to safeguard you and your family for as low as \$3 per month. All of the plans offer a total recovery solution, meaning that you don't have to lift a finger, except to get in contact with us.

For more information, [download a flyer](#), call 1-877-833-9041, or visit [mnea.securusid.com](http://mnea.securusid.com).

[Check it out](#)

The My Deals mobile app allows you to access discounts easily on your smartphone. All you need to do is download, register and save. Search for "My Deals" in either the Android Google Play store or Apple iTunes store. To register, enter your contact information and your affiliate (MNEA-Missouri NEA). You may need to enter your NEA ID if it asks you.

**Your NEA ID:**  
0000000000

**Need help with My Deals?**  
Call (800) 331-8867

[Install Apple App](#)

[Install Android App](#)

[Log into MNEA.org](#)

NEA 10-Digit Member ID (with the leading zeros)  
Your NEA ID is 0000000000

Having trouble?  
Call (573) 634-3202.

[Log in Members Only](#)



Facebook



Twitter



YouTube



Pinterest



Instagram

MNEA | MYNEA360 | NEA

In the Loop is an electronic newsletter for Missouri NEA members.  
It is published monthly September through May.

Missouri National Education Association

1810 E Elm Street, Jefferson City, MO 65101

PH 573.634.3202 • 800.392.0236

Fax 573.634.5646

[www.mnea.org](http://www.mnea.org)

Phillip Murray, President • DeeAnn Aull, Executive Director  
Rishanda Richardson, Electronic Communications and Research Coordinator

-----  
You are currently subscribed to the MNEA In the Loop mailing list. Update your profile by sending an email message with your full name, old email address and new email address to [rishanda.richardson@mnea.org](mailto:rishanda.richardson@mnea.org).

MNEA does not share or sell your information.

-----  
[Privacy Policy & Terms of Use](#)

All Rights Reserved

Copyright © 2001-2021

Email published by the Missouri NEA  
1810 East Elm Street, Jefferson City, Missouri 65101-4174

---